

Should Alexa diagnose Alzheimer's?: Legal and ethical
issues with at-home consumer devices
(with Barbara Evans, Carmel Shachar, I. Glenn Cohen)

David A. Simon

Lecturer on Law & Research Fellow

Petrie-Flom Center for Health Law Policy, Biotechnology, & Bioethics

Harvard Law School



Research Question

- What are the legal/ethical implications of using in-home products/devices to diagnose disease?

Talk Structure

- Methods
- Findings
- Suggestions

Method

- Vignette

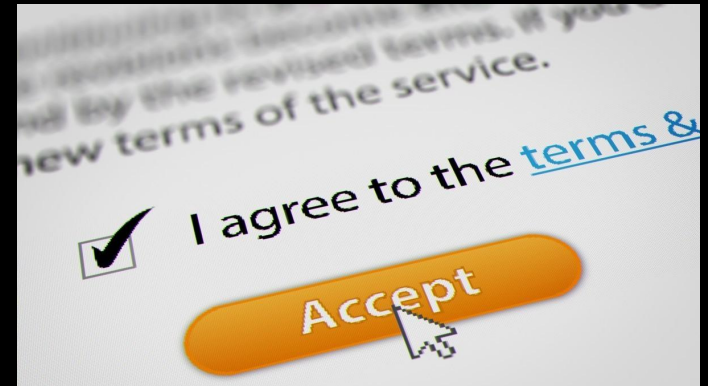


Findings

- Consent
- Bycatching
- Legal Consequences
- Privacy
- FDA Regulation

Consent

1. What is it?

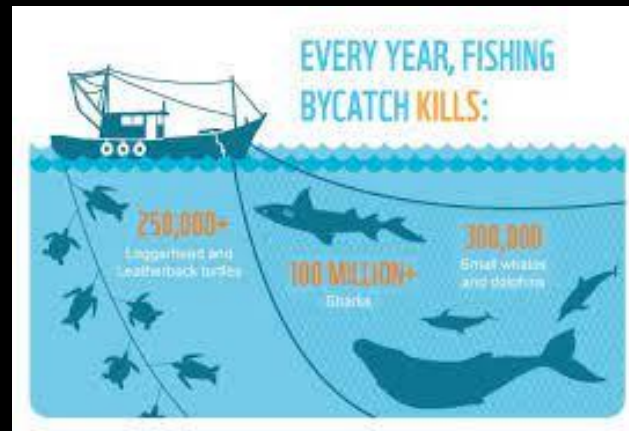


2. What are the questions here?

In 2017, 22,000 people who signed up for free public Wi-Fi inadvertently agreed to 1,000 hours of community service — including cleaning toilets and "relieving sewer blockages," the [Guardian](#) reported. The company, Manchester-based Purple, said it inserted the clause in its agreement "to illustrate the lack of consumer awareness of what they are signing up to when they access free wifi."

Bycatching

1. What is it?



2. What are the questions here?



Legal Consequences

1. What are they?



2. What are the questions here?

Privacy

1. What is it?



2. What are the questions here?



FDA Regulation

1. What is it?



2. What are the questions here?



Takeaways

- Problems are
 - Multilayered
 - Interconnected
- Solutions must be
 - Comprehensive
 - Flexible
 - Broadly applicable, but tailored

Thanks!

dsimon@law.harvard.edu

Research Fellow

Petrie-Flom Center for Health Law Policy, Biotechnology, & Bioethics

Harvard Law School